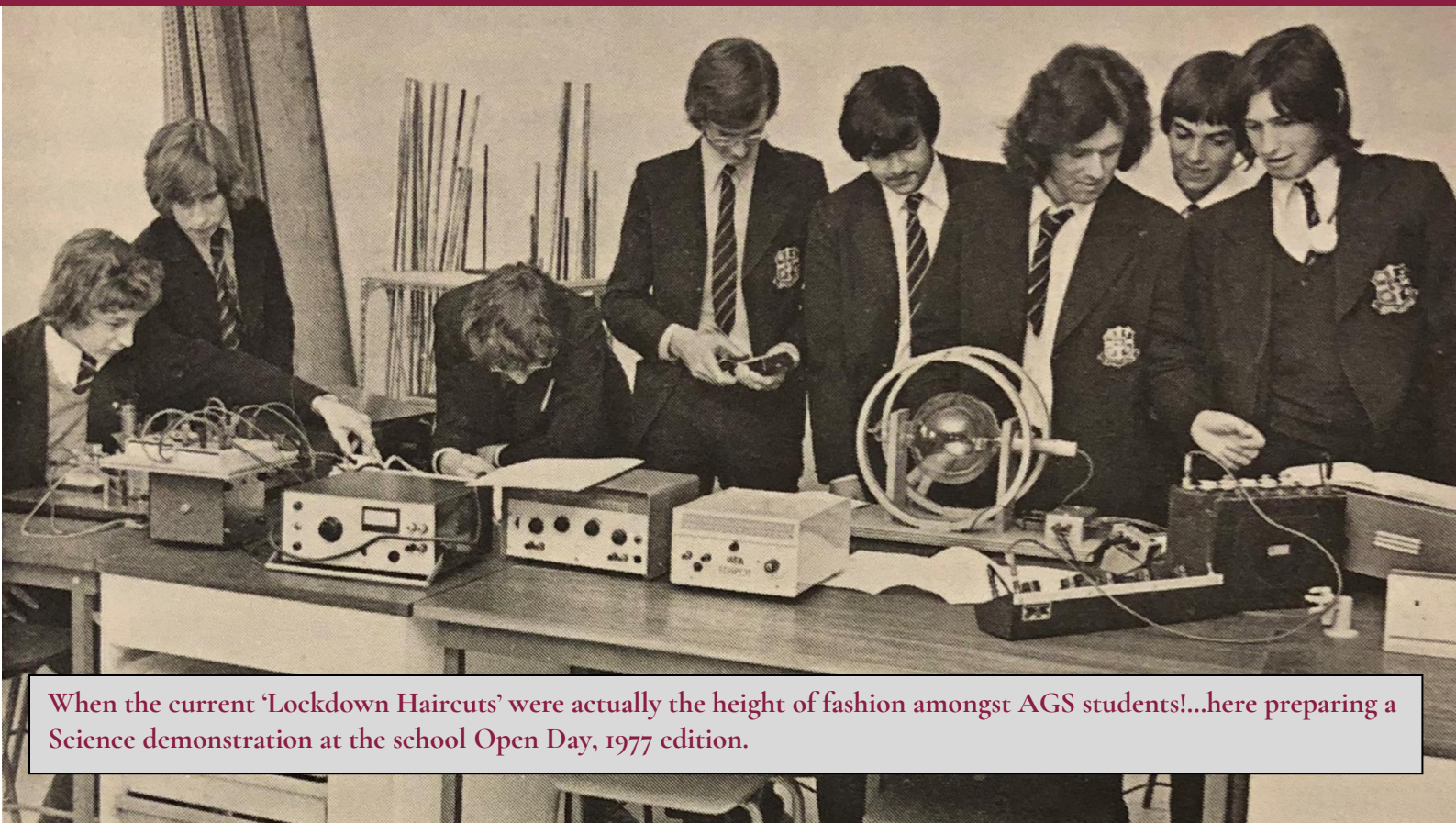




AYLESBURY
GRAMMAR SCHOOL
Founded 1598

AGSNEWSLETTER

SPRING TERM 2021



When the current 'Lockdown Haircuts' were actually the height of fashion amongst AGS students!...here preparing a Science demonstration at the school Open Day, 1977 edition.

Welcome to the Spring Term edition of the AGS Newsletter. Well, another term has flown by. In school we are still adjusting to life back 'on site', and students have just finished a series of very different in school tests where everyone hopes for negative results and thankfully they have been!

It has been a monumental effort from our small army of staff and volunteers who have organised, overseen and processed over 3500 individual lateral flow tests since we returned to the school site. Our collective thanks goes out to all involved for helping to keep us all safe.

We now continue to take those tentative steps towards 'normality' and the students have been fantastic in terms of observing the in-school restrictions and realising their important individual responsibility working for the greater good.

Despite the disrupted nature of the Spring term just gone, there have been various developments and future planning agreed which I hope you will enjoy reading about in the coming pages – Enjoy!

Mr G Dallas - Editor

[HTTPS://AGS.OLIVERASP.CO.UK/LIBRARY](https://ags.oliverasp.co.uk/library)



24/7 ACCESS!

SEARCH THE CATALOGUE

RESERVE BOOKS

RENEW LOANS

ADD REVIEWS

CREATE BOOK LISTS



Did you know?...Our school Library catalogue is now available to all students from home!

“IVATTS for FOOTWEAR”

AYLESBURY AND WENDOVER.

ALL FOOTWEAR AND REPAIRS
COST THE SAME AT BOTH SHOPS. SEE WINDOWS

Sturdy
Shoes for
Wear
and Tear.



Best
House
for
Repairs.

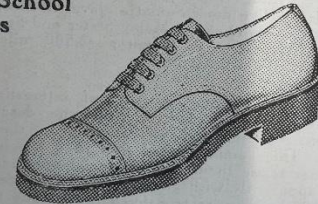
BROGUES, in Box Calf and Willow.

**Grammar School
Shoes
for Boys.**

Prices:

2-5—9/9,

6-11—11/6



**Grammar
School
Shoes
for Girls.**

Prices:

5/6 & 7/11

STOUT LACE SHOES, in all good makes.

The WENDOVER BUSINESS recently purchased from the Bucks Boot Company, High Street, is now under entirely NEW Management. Customers residing in Wendover and Halton District are cordially invited to visit us there.

IVATTS & SON,
27, KINGSBURY,
AYLESBURY.

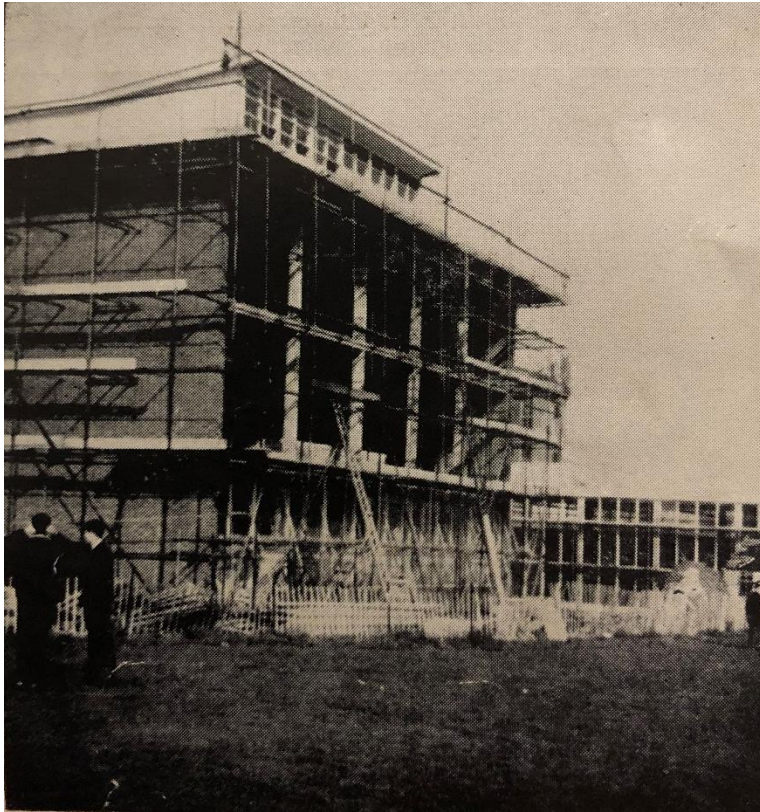
'Phone 194.

**HIGH STREET,
WENDOVER.**

'Phone 86.

Getting ready for the return to school did cause a few headaches when uniform items were a little less roomy than in December and the shops being closed.....and we won't mention the hair! No such problem in 1930 with 'Grammar School Shoes' readily available in the local area!

SPOT THE DIFFERENCE...



1963



2021

Thanks to a successful bid from the Government's decarbonisation scheme our Tower block has been receiving a full window replacement in time for its 58th Birthday this year. Aside from the scaffolding looking quite a bit safer these days there is not much difference in the two images! Of course, this is not the first facelift in that time, but a timely one to ensure our site is as up to date and efficient as possible to support the learning and wellbeing of all students and staff who spend their working days here.

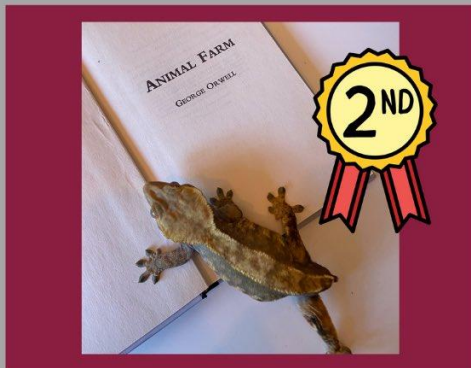
CLUCK & COLLECT

During the latest lockdown and school site closure many of our staff tried to keep students' spirits up with daily challenges, quizzes, riddles and other enrichment activities. These were greatly appreciated by students although I'm not sure Mr Mansfield has yet recovered following his 'bring a cuddly toy or pet to registration' session with Denson 7...

And, just because I know some of you will be thinking it, no there definitely was not a Food Tech lesson later in the day!



PETS CAUGHT READING



Keeping with a similar theme, the school Library ran a 'Pets Caught Reading' photo competition during lockdown. Entries came in such numbers that they were forced to split the competition into two distinct categories; Real pets and Not-real pets.

Here are the worthy winners from each category!

ECO-TEAM

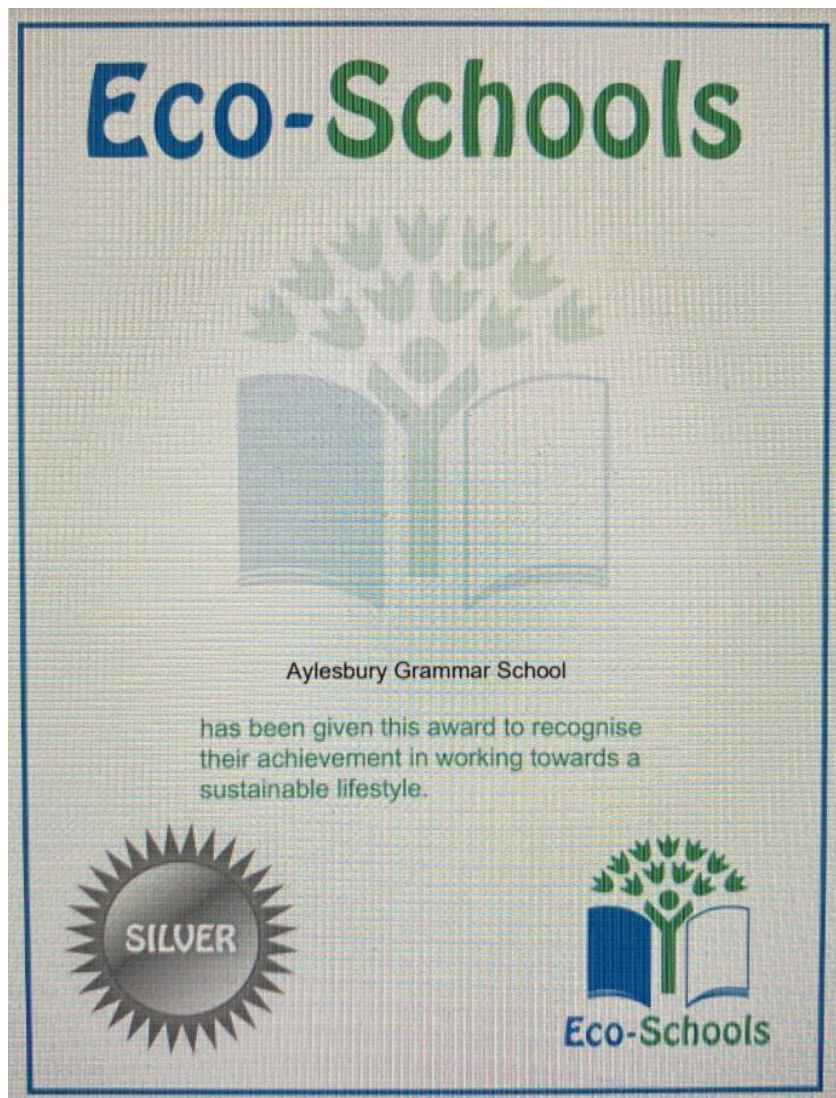
Despite the ongoing disruption due to the pandemic the work of the Eco-Team has been progressing where possible. We are very pleased to announce that the school has just received its Silver Eco-Schools accreditation and we are now working towards achieving the top, Green Flag status in the coming months. Well done to all who have made this possible!

We reported on the work of the gardening team in the previous newsletter and of course since then we have largely been in lockdown. But behind the scenes we have now had our urban garden plans approved and thanks to some generous funding from the PTA the area in question (see below) should be developed in the next few weeks.



We are extremely grateful that one of our parents, Mr Frampton has kindly offered to project manage for free and all being well, some or all of the work will be completed during the upcoming Easter break. We cannot wait to show you a very different picture than the one above in the Summer edition of this Newsletter.

Watch this space!





BATTERY COLLECTION

As part of our ongoing commitment to the Eco-Schools programme and making our school life and site as ecologically friendly as possible we have just completed a site-wide collection of used batteries which will now be processed and disposed of/recycled appropriately.

Four large buckets were filled and we are very pleased these will definitely NOT be making their way to landfill at any point!

We will be looking to widen this out to a student battery collection soon, so start checking those drawers at home for any dead batteries!

MR RAMSBOTTOM IS RAISING FUNDS TO SUPPORT CARDIAC RISK IN THE YOUNG – PLEASE SUPPORT HIM IF YOU CAN...

Mr Ramsbottom is doing something amazing for our students and to raise awareness of the incredibly important charity CRY. His aim is to create a CRY hardship screening fund here in School to support the screening of our students. In the autumn term we will set up screening days at AGS to screen our students. We want to do all we can to raise awareness and to prevent sudden cardiac deaths.

I'm fundraising for the fabulous charity CRY - Cardiac Risk in the Young. CRY's Vision is preventing young sudden cardiac deaths through awareness, screening and research, and supporting affected families. My ambition is to raise as much money as possible, to build an AGS CRY screening fund, to be used to provide screening opportunities and also, to support our families who are not in a position to fully fund screening for their sons themselves. As an ambitious target, we have provisionally booked CRY to come in for two days screening in the autumn term this year.

CRY supports young people diagnosed with potentially life-threatening cardiac conditions and offers bereavement support to families affected by YSCD. CRY promotes and develops heart screening programmes and funds medical research and offers subsidised ECG and Echocardiogram screening to all young people between the ages of 14 & 35.

Mr G Ramsbottom

<https://www.justgiving.com/fundraising/agsrambo141miles>



TESTING TIMES

Following a huge effort from our premises and support staff and a small army of trained volunteers, during the last lockdown period the Lecture Theatre was reconfigured into our on-site Covid-19 testing centre.

We are hugely thankful to the AGS staff involved and the wider school community who worked, (and continue to work) tirelessly in order to keep our site and students as safe as possible.

Around 3,500 Lateral Flow tests were overseen and administered in a very short space of time – a fantastic effort!



LOCAL GEOLOGY

For those of you looking for an extra geological dimension to your family walks either in or out of lockdown, Mr Jones is happy to oblige. He has information on a number of local sites which we will look to share more widely in future, but here's an example to start you off with, right in the centre of Aylesbury.

Location: Aylesbury HP20 1TN

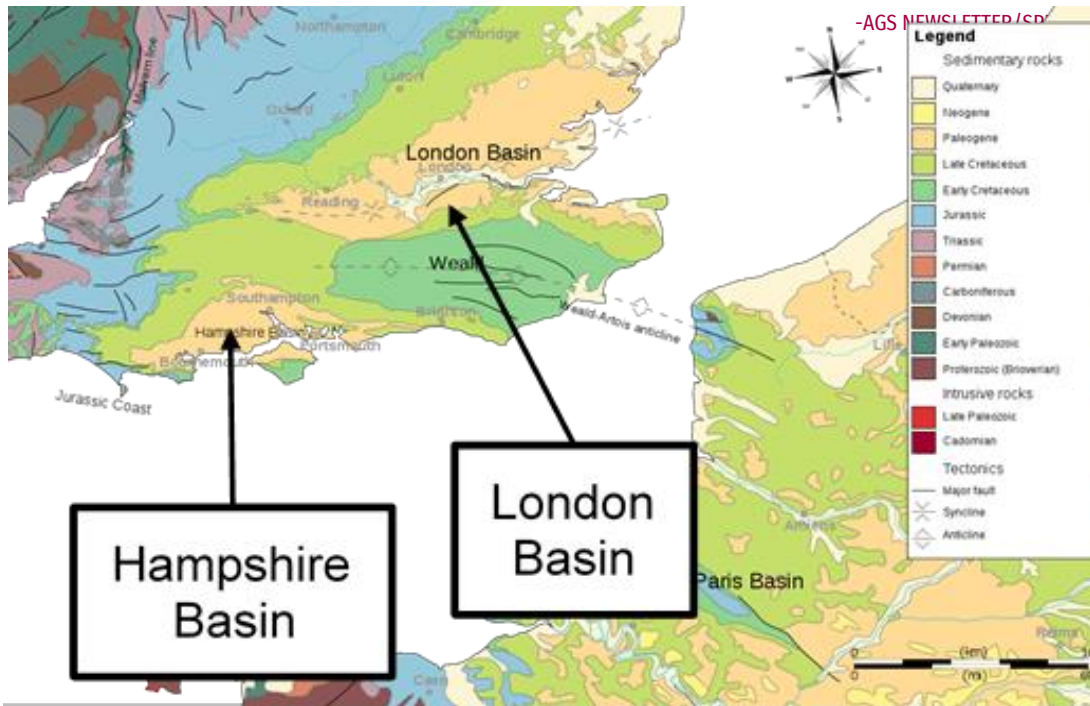
In Market Square in the centre of Aylesbury, there are two statues facing each other. Two politicians forever locked in a political debate. Maybe they're sharing the finer points of legal strategy, or arguing about the changes that they see around them every day?

Limestone is a sedimentary rock, which means that it was formed from the settlement of calcium carbonate and micro-organisms on the bed of a warm, deep ocean over millions of years. As a building material limestone is popular because it is hard and durable and stands up well to exposure. However unless there is a ready local source of the material its heaviness makes it an expensive stone to build from as it has to be transported over long distances. The most popular limestone for use in buildings and statues is Portland Limestone from Portland in Dorset, due to its rich creamy-white colour.



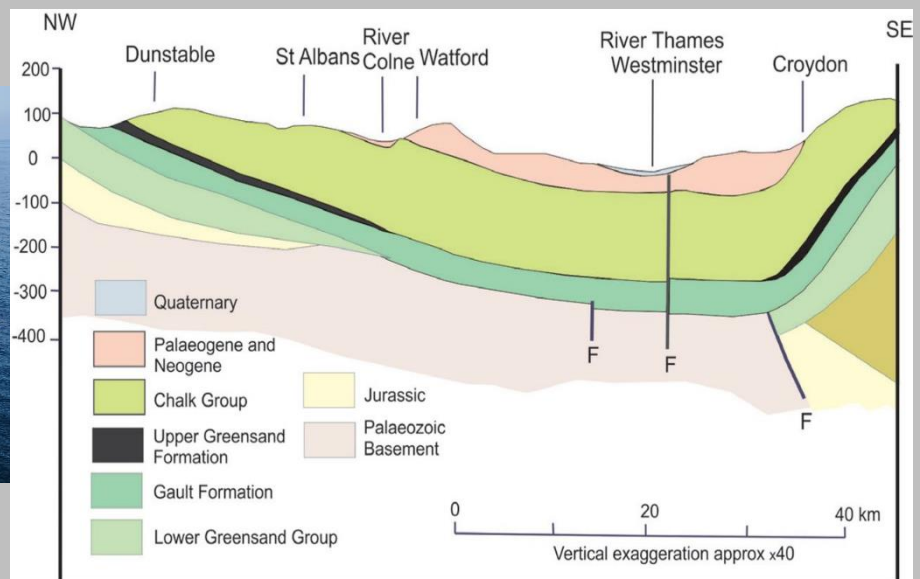
Aylesbury sits on a seam of **limestone**, which settled in the Jurassic period when most of this area was underwater. Limestone was quarried locally well into the twentieth century and many local buildings, especially churches, are constructed from the material. Many of the properties of the local limestone are similar to the limestone quarried in Portland, except the Aylesbury limestone is duller and features more greys and browns than white. Limestone from Portland also has a richer fossil record than the local material; the fossils tend to be larger and occur more frequently, and are easier to spot due to the creamy-white colour of the stone.

The **Hampshire Basin** is a geological basin of Palaeogene age in southern England, underlying parts of Hampshire, the Isle of Wight, Dorset, and Sussex. Like the London Basin to the northeast, it is filled with sands and clays of Paleocene and younger ages and it is surrounded by a broken rim of chalk hills of Cretaceous age.



Look at the light blue on the map on the left. This shows the location of the Jurassic rocks in the UK, including the rock used to make the rock pedestal on which John Hampden's statue stands. It is covered by rocks from the Cretaceous (green), Paleogene (Orange), Neogene (Yellow) and Quaternary (White). These rocks are all younger. The blue Jurassic rocks curve downwards from the Chilterns and re-emerge along the south coast at the Jurassic Coast in

Dorset. Durdle Door (pictured below left) is also made from Jurassic limestone. This can be seen in the cross section below where the Jurassic chalk forms a folded feature called a **syncline**. The chalk bed forms the Chilterns and the North Downs.



Questions (just to think about – no need to hand in!)

Study the limestone pedestal of the John Hampden statue (pictured above).

1. Provide a description of the stone in terms of colour, texture and grains.
2. The stone is discoloured in some places. What do you think is the cause of this discolouration?
3. There are various fossils visible in the limestone that the pedestal is made from.
 - a. Find one and describe it in terms of size, form and colour.
 - b. What creature do you think it used to be?
 - c. Where would this creature have lived?
 - d. What does this tell us about the environment where the limestone formed?
4. Read the description above of limestone from Portland and limestone from Aylesbury.
 - a. Do you think the limestone used in the pedestal quarried locally or imported? Why do you think this?

References

Geolosoc.org.uk
Geocaching.com
Wikipedia

Mr M Jones – Head of Geology

MEDSOC UPDATE

After the January holidays, when school went online again, the AGS MedSoc was transformed into the Virtual Medical Society. Each week external speakers would join our Google Meet and impart their knowledge, giving presentations to eagerly listening aspiring medics and dentists from year 11 and 12. These varied from AGS alumni in medical school to student members in MedSoc. The talks on medical ethics and advice on getting into medicine proved invaluable. As school reopened to all, we transitioned back to in-person medical society, unfortunately year 11s were not able to attend. but, with the medical society Google Classroom we are still able to provide resources such as courses and work experience for aspiring medics in year 11.

There has also been a recent change in the leadership of MedSoc, with the formation of a committee, led by Ashre Moses (Pa12) and Torsten Hansen (R12). They have led sessions, given presentations, and coordinated ideas for extra parts of the AGS MedSoc. We also have an AGS Medical magazine in the works, put together by an editing team, and are developing a medical book club. We would like to thank all the speakers and attendees, and give a special thanks to Dr McNamara, Mrs Wilson, Mrs Taylor and Mrs Cox for organising external speakers to give talks and helping the committee find their feet. We look forward to seeing the medical society continue to grow.

Torsten Hansen (Ridlev 12) & Ashre Moses (Paterson 12)

FUNDRAISING NEWS

Just a reminder to ask you to consider making a small donation each month to improve our School facilities. The challenges facing school funding are not going away and now, more than ever, we need your support.

Why Donate?

- AGS remains one of the lowest funded schools in Buckinghamshire.
- AGS remains in the bottom twenty least-funded state secondary schools in England.
- Despite this, we are one of the top performing schools in the country.
- For Value Added at A Level, AGS is the top performing grammar school in Buckinghamshire.

Current Funding

- We receive £5000 annually from the Department of Education to educate each student in Years 7 – 11. We receive just £4150 for each student in Years 12 & 13.
- Funding just about covers our basic operating costs through efficient financial management.
- We have been on this site for over a century and many of our learning and teaching spaces are in dire need of attention.
- We have a detailed School Development Plan but there are no funds available within our budget to update, refurbish or develop our School site.

Why?

Before the crisis we were raising funds for the refurbishment of our **Art, DT and Engineering** classrooms which are no longer fit-for-purpose for teaching the modern curriculum. We need £450,000 to complete the refurbishment. To date we have raised over £140,000 in gifts and pledges, having already received a substantial donation from a local trust of £300,000. This means we have £10,000 left to raise to complete the project this summer. The long-term impact of COVID-19 is not yet fully understood for schools but we simply have to keep trying to raise the funds. Our School will be here long after this pandemic and our students still need, actually they deserve, to be educated in facilities that are fit-for-purpose.

Finally

We are asking you to sign up monthly for something that we hope you will hardly notice month-by-month. Only you know what that sum would be. A round of coffees? Lunch for two? With Gift Aid, and spread over several years, it would amount to a very useful sum. Importantly, money raised will be used to fund urgent refurbishments, never to 'top-up' the School budget.

If you don't feel you can give anything then that is absolutely not a problem. AGS is, after all, a state school, but if you can donate a monthly gift, however small, then please let us know by:

- simply **by emailing development@ags.bucks.sch.uk with 'Yes'**
- please **go on line [here](#)** to set up a regular donation on our community site (scroll down to donate now)



- **or [here](#)** to complete a donation form to then email back to development@ags.bucks.sch.uk.
- Or simply log onto your ParentPay account where there is the opportunity to donate.

Thank you – any support, at any level, would be amazing.

Alison Cox
Development Director
Registered Charity Number | 1089244

SNAPSHOT OF THE CURRENT FACILITIES...





VISION FOR THE REFURBISHMENT OF ART, DT & ENGINEERING AT AGS...



AROUND THE WORLD CHALLENGE



AROUND THE WORLD CHALLENGE

WHEN

- 8am Mon 8th - 8pm Fri 12th February
- This can be completed during your PE or games lessons, or after school

REGISTRATION

- Go onto your year group PE Google Classroom page and complete the form
- It is important to verify your distance with a screenshot
- You can register multiple attempts, but they must have supporting evidence

THE CHALLENGE

- To complete 40 minutes of continuous foot-based movement (running, walking or cycling)
- Please download and use the Strava app or an equivalent that records the time and distance
- If you are recording steps, then 1 step = 1 metre

THE PRIZE

- Your efforts will be combined with students and staff within your House
- The House which travels the furthest distance away from AGS will be crowned the winners



BONUS

We are also competing against SHFGS, JHGS, & RGSBW to see which school can travel the furthest distance!



In February the PE Department organised an Around the World Challenge....

Overall it was an incredible effort from the whole school travelling 3494 miles!!!

Paterson House travelled the furthest and therefore were worthy winners of our house competition but all 6 houses had some really positive engagement.

As a school we travelled the furthest in the inter-school competition (other 3 schools were RGS, Sir Henry Floyd and John Hampden) which also demonstrates the high level of engagement and participation from students and staff.

I think it is fair to say that we were blown away with the number of staff who supported the challenge! There were 160 submissions from staff throughout the week including miles banked or donated from walking, running and cycling.

It appears that we have a competitive staff body and that the house competition is a motivating factor for all of the AGS community! A special mention to Mr Gibbs for organising all of the IT in the background which made it so easy to provide updates and give out rewards to deserving students.

Mr R Rooney

Ways To Connect



Twitter

Follow our main account:

@AGSFounded1598

Departments and more!

@AGSHeadmaster

@AGSCommunities

@AGSLearner @AGSHouses

@AGSPTA @AGSSportandPE



Follow our company page:
Aylesbury Grammar School



School Website

Discover more at:

ags.bucks.sch.uk



Facebook

Like our Aylesbury Grammar School page



Follow us @AGSFounded1598



Some of our local residents definitely enjoyed the somewhat quieter nature of the school site during lockdown!

Thank you very much for reading and we wish you all a restful and peaceful Easter break





AYLESBURY
GRAMMAR SCHOOL
Founded 1598

Nurturing Character since 1598

Aylesbury Grammar School
Walton Road, Aylesbury
Buckinghamshire, HP21 7RP

T 01296 484545
E office@ags.bucks.sch.uk

ags.bucks.sch.uk

