



AYLESBURY  
GRAMMAR SCHOOL  
*Founded 1598*

# CHILD PROTECTION POLICY

## **CATEGORY A**

This policy is updated and approved by the Governing Body annually.

This version is based on the Buckinghamshire Council Model Policy and was approved by the Full Governing Body in January 2025.

The next update will be due by January 2025.

SIGNED: \_\_\_\_\_

**Mr R Williams - Chair of Governors**



## CONTENTS

1.       Contacts
    - School contacts
    - Contacts in the Local Authority
    - Linked policies
    - Definitions
  2.       Introduction
  3.       Responsibilities
  4.       Procedures
  5.       Record-keeping and retention of records
  6.       Alternative Provision
  7.       Confidentiality
  8.       Recognising abuse and dealing with a disclosure
  9.       Multi-agency working
  10.      Supporting staff
  11.      Safer Recruitment
  12.      Allegations against staff, supply staff, volunteers and contractors (including Governors)
  13.      Whistleblowing
  14.      Physical intervention/positive handling
  15.      Anti-bullying
  16.      Discriminatory incidents
  17.      Health and Safety
  18.      Prevention
  19.      Online safety
  20.      Sending nude or semi-nude images
  21.      Child on child abuse, including sexual violence and sexual harassment
  22.      Cultural Issues
  23.      So-called 'honour' based abuse
  24.      Contextual safeguarding and extra familial harm
  25.      Serious violence
  26.      Domestic abuse
  27.      Children in need of a social worker (Child Protection and Child In Need Plans)
  28.      Mental health
  29.      Looked After Children
  30.      Children with family members in prison
  31.      Homelessness
  32.      Modern Day Slavery and the National Referral Mechanism
  33.      Allegations against students
  34.      Policy Review
- APPENDIX

## 1. Contacts

### 1.1 School contacts

<b>Headmaster</b>	Mr M J Sturgeon 01296 484545; Headmaster@ags.bucks.sch.uk
<b>Designated Safeguarding Lead (DSL)</b>  <b>Mrs Wilson is also the person in charge of LAC and former LAC students</b>	Mrs Laura Wilson 01296 484545; lwilson@ags.bucks.sch.uk
<b>Additional Designated Safeguarding Lead(s)</b>  <b>Mrs Richards is also our SENDCo &amp; Mental Health Lead</b>	Mrs J C Richards 01296 484545 <a href="mailto:jrichards@ags.bucks.sch.uk">jrichards@ags.bucks.sch.uk</a>  Mr G Dallas 01296 484545 <a href="mailto:gdallas@ags.bucks.sch.uk">gdallas@ags.bucks.sch.uk</a>  Mrs N Roberts 01296 484545 <a href="mailto:nroberts@ags.bucks.sch.uk">nroberts@ags.bucks.sch.uk</a>
<b>Nominated Safeguarding Governor</b>	Mr R Williams; <a href="mailto:rwilliams@ags.bucks.sch.uk">rwilliams@ags.bucks.sch.uk</a>
<b>Chair of Governors</b>	Mr R Williams; <a href="mailto:rwilliams@ags.bucks.sch.uk">rwilliams@ags.bucks.sch.uk</a>

### 1.2 Contacts in County

<b>Education Safeguarding Advisory Service</b> ESAS offers support to education providers to assist them to deliver effectively on all aspects of their safeguarding responsibilities.	01296 387981  <u>Secure-</u> <a href="mailto:esasduty@buckinghamshire.gov.uk">esasduty@buckinghamshire.gov.uk</a>
<b>First Response Team (including Early Help, Channel)</b> The First Response Team process all new referrals to social care, including children with disabilities. Referrals are assessed by the team to check the seriousness and urgency of the concerns and whether Section 17 and/or Section 47 of the Children Act 1989 apply. The First Response Team will ensure that the referral reaches the appropriate team for assistance in a quick and efficient manner.	01296 383962  Out of hours 0800 999 7677  <u>Secure-</u> <a href="mailto:cypfirstresponse@buckinghamshire.gov.uk">cypfirstresponse@buckinghamshire.gov.uk</a>
<b>Local Authority Designated Officer (LADO)</b> The Buckinghamshire Local Authority Designated Officer (LADO) is responsible for overseeing the management of all allegations against people in a position of trust who work with children in Buckinghamshire on either a paid or voluntary basis	01296 382070  <u>Secure-</u> <a href="mailto:lado@buckinghamshire.gov.uk">lado@buckinghamshire.gov.uk</a>
<u>Bucks Family Information Service</u> Information for families on a range of issues including childcare, finances, parenting and education	01296 383065

<a href="#">Buckinghamshire Safeguarding Children Partnership (BSCP)</a> Procedures, policies and practice guidelines
Schools Web School bulletin, Safeguarding links, A – Z guide to information and services
Thames Valley Police 101 (999 in case of emergency)

1.3 This policy should be read in conjunction with the following policies:

- Anti-bullying Policy
- Allegations of Abuse against Staff procedure
- Attendance for Learning Policy
- Behaviour for Learning Policy (includes Mobile Phones/devices and the use of reasonable force)
- Student Codes of Conduct and Home School Agreement
- Smoking, Alcohol and the Misuse of Drugs and Substances Policy
- Equal Opportunities Policy
- ICT Acceptable Use Policy for Students
- Lettings Policy
- SEND Policy (including managing children with medical needs)
- Health & Safety
- Pastoral Care Policy
- Privacy Notices
- Online Safety (including use of social media)
- Employment Manual (includes Staff Code of Conduct and Whistleblowing)
- PSHE
- Safer Recruitment
- Relationships and Sex Education Policy (RSE)

1.4 Definitions:

‘Safeguarding and promoting the welfare of children is defined for the purpose of this policy as:

- Providing help and support to meet the needs of children as soon as problems emerge
- Protecting children from maltreatment, whether that is in or outside the family home, including online
- Preventing impairment of children’s mental and physical health or development
- Ensuring that children grow up in circumstances consistent with the provision of safe and effective care
- Promoting the upbringing of children with their birth parents, or otherwise their family network through a kinship care arrangement, whenever possible and where this is in the best interests of the children
- Taking action to enable all children to have the best outcomes inline with outcomes set out in the Children’s Social Care National Framework.

- 1.5 Child protection is part of safeguarding and promoting the welfare of children and is defined for the purpose of this guidance as activity that is undertaken to protect specific children who are suspected to be suffering, or likely to suffer, significant harm. This includes harm that occurs inside or outside the home, including online.’ (Working Together December 2023)
- 1.6 Abuse is a form of maltreatment of a child and may involve inflicting harm or failing to act to prevent harm. Further information regarding the categories of abuse can be found in the appendix to this document.
- 1.7 Children includes everyone under the age of 18. Once a child reaches their 18 birthday they will fall under adult social care and the School would refer any vulnerable young adults through to the adult safeguarding team if required.

## 2. Introduction

- 2.1. At Aylesbury Grammar School we believe that a policy on child protection is founded on the right of all children to be safe. We expect all members of the School community including staff, governors, supply staff and volunteers to share this commitment. Every member of the School community is responsible for contributing to a positive culture of safeguarding.
- 2.2 The aim of this policy is to provide staff, supply staff, governors and volunteers with the framework they need to keep children in Aylesbury Grammar School safe and secure and to provide parents and carers with the information about how we will safeguard their children whilst in our care.
- 2.3 This policy has been developed in accordance with the following legislation and guidance:
- Children Act 1989 (amended 2004)
  - “Working Together to Safeguard Children” Working together to safeguard children - GOV.UK ([www.gov.uk](http://www.gov.uk))
  - “Keeping Children Safe in Education”- statutory guidance for Schools and further education colleges. Updated annually and shared with all staff.
  - Information Sharing Guidance for Safeguarding Practitioners Information sharing advice for safeguarding practitioners - GOV.UK ([www.gov.uk](http://www.gov.uk))
  - Information Sharing Guidance for Safeguarding Practitioners Information sharing advice for safeguarding practitioners - GOV.UK ([www.gov.uk](http://www.gov.uk))
  - Children Missing Education; Statutory Guidance for Local Authorities - Sept 2016 [Children missing education - GOV.UK](#)
  - Statutory Guidance issued under section 29 of the Counter-Terrorism and Security Act - 2015 [Prevent Duty Guidance](#)
  - The Equality Act - 2010 [Equality Act 2010: guidance - GOV.UK](#)
  - What to do if you’re worried a child is being abused - March 2015 [What to do if you are worried a child is being abused](#)
  - Statutory guidance on FGM [Multi-agency Statutory Guidance on Female Genital Mutilation](#)
- 2.4 We believe clear governance and leadership is central to embedding a safeguarding culture. The Governing Body takes its responsibility seriously under **section 175 of the Education Act 2002** (section 157 for independent academies and free Schools) to safeguard and promote the welfare of children; working together with other agencies to ensure effective and robust arrangements are in place within our School to identify and support those children who are suffering harm or whom may be at risk of harm.
- 2.5 Part 3 of the schedule to the [Education \(Independent School Standards\) Regulations 2014](#), which places a duty on academies and independent Schools to safeguard and promote the welfare of pupils at the School.
- 2.6 Governors will ensure all staff at the School have read and understood their responsibilities pertaining to **Part 1, Part 5 and Annexe B of Keeping Children Safe in Education, Sept 2024**.
- 2.7 All staff are required to read and adhere to the **Staff Code of Conduct**. Every member of the School community is responsible for contributing to a positive culture of safeguarding.

- 2.8 The School recognises that as well as risks to the welfare of children from within their families, children may be vulnerable to abuse or exploitation from outside their homes, including online and from other children. Staff must remain vigilant and alert to these potential risks.
- 2.9 The aims of this policy are:
- To provide an environment in which children feel safe, secure, valued and respected.
  - Children feel confident that they can talk to adults within School to share any concerns that they may have.
  - To ensure all teaching staff, non-teaching staff, supply staff, governors and volunteers:
    - are aware of the need to safeguard and promote the wellbeing of children
    - identify the need for early support
    - promptly report concerns, in line with guidance from the Buckinghamshire Continuum of Need
    - are trained to recognise signs and indicators of abuse.
  - To provide systematic means of monitoring children known to be or thought to be at risk of harm and ensure contribution to assessments of need and support plans for those children.
  - To ensure Aylesbury Grammar School has a clear system for communicating concerns both internally and with external agencies in line with the Working Together guidance.
  - To ensure the School has robust systems in place to accurately record safeguarding and child protection concerns.
  - To develop effective working relationships with all other agencies involved in safeguarding, supporting the needs of children at our School.
  - To ensure that all staff appointed have been through the safer recruitment process and understand the principles of safer working practices as set out in our **Staff Code of Conduct**.
  - To ensure that any community users of our facilities have due regard to expectations of how they should maintain a safe environment, which supports children's wellbeing.
- 2.10 This policy is published on our website, under About Us; Policies. Hard copies are available from the School office.

### 3. Responsibilities

- 3.1 All **staff, supply staff, volunteers, visitors, governors and contractors** understand that safeguarding children is everyone's responsibility. Any person who receives a disclosure of abuse, an allegation or suspects that abuse may have occurred must report it immediately to Mrs LE Wilson (Designated Safeguarding Lead; DSL) or, in their absence, to Mrs J C Richards, Mr G Dallas or Mrs N Roberts (Additional DSLs). In the absence of any of the above, concerns will be brought to the attention of the most senior member of staff on site. Staff understand that if there is an immediate risk of harm then the police or First Response will be called directly and the DSL will be updated at the earliest opportunity.
- 3.2 Staff must maintain a good working knowledge of the Buckinghamshire Continuum of Need [The Continuum of Need - Buckinghamshire Safeguarding Children Partnership \(buckssafeguarding.org.uk\)](https://buckssafeguarding.org.uk) and any updates and how it should be used to inform decision making regarding a referral to First Response.
- 3.3 Staff have the skills, knowledge and understanding to keep both looked after children and previously looked after children safe.

3.4 Staff understand vulnerability and that barriers exist when recognising abuse and neglect for children. Consider the following groups who may have increased vulnerability:

- Young carers
- Children with SEND
- Children living with domestic abuse
- Children who are experiencing poor mental health
- Children whose parents/carers suffer with poor mental health, including substance misuse
- Criminal exploitation, including sexual exploitation, radicalisation and gang involvement
- Looked after children and previously looked after children
- Children who have a social worker
- Privately fostered children
- Children whose parent(s)/carer (s) are in prison
- Asylum seekers
- So-called Honour Based Violence, including FGM and forced marriage
- Children who frequently go missing or whose attendance is a concern
- Children who are part of the LGBTQ group or who are exploring gender identification
- Children who are at risk of discrimination due to faith and belief, race or ethnicity
- Children who have English as an additional language (EAL)
- Children who are living in temporary accommodation.

3.5 The Governing Body understands and fulfils its safeguarding responsibilities. It must:

- 3.5.1. Ensure that the Headmaster and (when not the Headmaster) the DSL create and maintain a strong, positive culture of safeguarding within the School.
- 3.5.2. Ensure that this policy reflects the unique features of the community we serve and the needs of the students attending our provision. This policy will be reviewed at least annually and whenever new guidance is issued.
- 3.5.3. Regularly monitor and evaluate the effectiveness of this Child Protection Policy via training and feedback.
- 3.5.4. Appoint a Designated Safeguarding Lead (DSL), who is a member of the Senior Leadership Team (SLT) and has the required level of authority and also appoint at least one Additional DSL. The Headmaster has overall responsibility for safeguarding within the School. The roles and responsibilities of the DSL and Additional DSL's are made explicit in those post-holder's role profiles. If not the DSL, the Headmaster still maintains overall responsibility for safeguarding and child protection within the School.
- 3.5.5. Recognise the importance of the role of the DSL, ensuring they have sufficient time, training, skills and resources to be effective. Refresher training must be attended every 2 years, in addition knowledge and skills must be refreshed at regular intervals, at least annually.
- 3.5.6. Ensure that all staff complete safeguarding training to include their roles and responsibilities with regards to the School IT system's online filtering and monitoring
- 3.5.7. Ensure measures are in place for the governing body to have oversight of how the School's delivery against its safeguarding responsibilities are exercised and evidenced, to include reviewing online filtering and monitoring on a regular basis and at least annually. Ensure robust structures are in place to challenge the Headmaster where there are any identified gaps in practice or procedures are not followed.
- 3.5.8. Recognise the vital contribution that the School can make in helping children to keep safe, through incorporation of safeguarding within the curriculum. This will also be taught through the PSHE

curriculum and relevant issues through the Relationship Education (primary Schools) or Relationship Sex Education (secondary Schools, mandatory from Sept. 2020). Ensure that through curriculum content and delivery children understand how to keep themselves safe.

- 3.5.9. Ensure that School is following the statutory RSE guidance – [Relationships and sex education \(RSE\) and health education - GOV.UK \(www.gov.uk\)](https://www.gov.uk/government/publications/relationships-and-sex-education-rse-and-health-education)
- 3.5.10. Ensure safe and effective recruitment policies and disciplinary procedures are in place.
- 3.5.10. Ensure resources are allocated to meet the needs of students requiring Child Protection or early intervention.
- 3.5.11. Ensure the DSL completes an Annual Safeguarding Report for Governors, and a copy is shared with the Education Safeguarding Advisory Service at Buckinghamshire Council.
- 3.6. It is the duty of the Chair of Governors to liaise with relevant agencies if any allegations are made against the Headmaster. If there are concerns that issues are not being progressed in an expedient manner, staff/students/parents/carers should escalate concerns to the Local Authority Designated Officer (LADO) via First Response.
- 3.7. The Governing body must ensure that procedures are in place to manage safeguarding concerns of allegations against staff, supply staff, governors, volunteers, visitors or contractors where they could pose a risk of harm to children. This must include those concerns that do not meet threshold (low-level concerns). The guidance in Part four of Keeping Children Safe in Education must be followed if there were any such concerns.
- 3.8. The Governing Body must ensure that a named teacher is designated for Children Looked After and that an up to date list of children who are subject to a Care Order or are accommodated by the County Council is regularly reviewed and updated. The School must work with the Virtual Schools Team to support the educational attainment for those children who are Looked After. At Aylesbury Grammar School, the nominated teacher for CLA is the DSL, Mrs LE Wilson.
- 3.9. The Governing Body must have assurance that any alternative provision attended by children on roll has appropriate safeguarding arrangements and child protection policies in place. The Governing Body must ensure that any children, at such a provision, are visited whilst they are attending, that the curriculum is appropriate to the needs of the child and that attendance is monitored daily.
- 3.10. Any outside agencies providing services or activities to the School have provided assurances that they have safeguarding policies and procedures in place.
- 3.11. The **Governing Body** has a statutory duty to appoint a Nominated Governor for safeguarding. The Nominated Governor must be familiar with [Buckinghamshire Safeguarding Children Partnership](#) procedures, Local Authority procedures and guidance issued by the Department for Education. The Nominated Governor must:
  - 3.11.1. Work with the DSL to produce the Child Protection Policy annually.
  - 3.11.2. Undertake appropriate safeguarding training, to include Prevent training.
  - 3.11.3. Ensure child protection is regularly discussed at Governing Body meetings
  - 3.11.4. Meet at least termly with the DSL to review and monitor the School's delivery on its safeguarding responsibilities and to review the Single Central Record.
  - 3.11.5. Ensure that filtering and monitoring systems are in place and take part in the review
  - 3.11.6. Take responsibility to ensure that the School is meeting the OFSTED requirements as set out in the inspection guidance:

- 3.12. All governors must complete safeguarding training on appointment, to also include Prevent training. This training must be regularly updated in line with national or local guidance.
- 3.13. The governing body must ensure that relevant staff have due regard to the relevant data protection principles set out in the Data Protection Act 2018 and the GDPR, which allow them to share or withhold personal information when it is necessary to safeguard any child.
- 3.14. We have a **Designated Safeguarding Lead (DSL)** who is responsible for:
- 3.14.1. Creating a culture of safeguarding within the School, where children are protected from harm. Ensuring all staff receive an effective induction and ongoing training to support them to recognise and report any concerns.
  - 3.14.2. Ensuring children receive the right help at the right time using the Buckinghamshire Continuum of Need document.
  - 3.14.3. Ensuring referrals to partner agencies are followed up in writing, including referrals to First Response.
  - 3.14.4. Establishing and maintaining a safe and secure system for recording and monitoring safeguarding and child protection records. These records must be audited regularly to ensure all actions are completed.
  - 3.14.5. Ensuring that the online filtering and monitoring system is reviewed regularly, at least annually.
  - 3.14.6. Ensuring all child protection files are held separately from students' educational records.
  - 3.14.7. Maintaining the record for staff safeguarding training and ensuring that the safeguarding team contact details and photos are displayed in prominent areas around the School and also on the website.
  - 3.14.8. Being the designated point of contact for staff to be able to discuss and share their concerns.
  - 3.14.9. Being available to staff and outside agencies during School hours and term time for consultation on safeguarding concerns raised. Having responsibility to ensure that cover is arranged outside of term-time during working hours. During residential and extended School hours, ensuring arrangements are in place for staff to have a point of contact.
  - 3.14.10. Contributing effectively to multi agency working, for the safeguarding and promotion of the welfare of children, as set out in Working Together.
  - 3.14.11. Providing the Headmaster with an annual report for the Governing Body, detailing how School delivers on its safeguarding responsibilities and any child protection issues within the School. The Governing Body will use this report to fulfil its responsibility to provide the Local Authority with information about their safeguarding policies and procedures.
  - 3.14.12. Meeting regularly at least once a term with the Nominated Governor to share oversight of the safeguarding provision within the setting, monitor performance and develop plans to rectify any gaps in policy or procedure. A record will be kept of these meetings. Providing the Headmaster with up-to- date information of any issues.
  - 3.14.13. Meeting the statutory requirement to keep up to date with knowledge, enabling them to fulfil their role, including attending mandatory and any other additional relevant training.
  - 3.14.14. Referring immediately to the Police, using the guidance, When to call the police, 2491596 C&YP Schools guides.indd (npcc.police.uk) for any cases where a criminal offence may have been committed or risk of harm is imminent.
  - 3.14.15. Completing DSL refresher training every 2 years and updating their skills and knowledge on a regular basis and at least annually, through means such as training, reading bulletins or attending DSL forums.
  - 3.14.16. To fulfil the DSL responsibilities as set out in the KCSIE, Annexe C.

The School's **Headmaster** is responsible for:

- 3.14.17. Ensuring that this policy is updated annually or before to reflect any changes to guidance and/or legislation.
- 3.14.18. Ensuring that this policy is published on the School website.
- 3.14.19. Recording, reviewing and making decisions on any low-level concerns, may be in conjunction with the DSL.
- 3.14.20. Liaising with the LADO in the event of an allegation being made against a member of the staff, volunteer or an organisation using the School premises.
- 3.14.21. Liaising with the DSL to ensure they have appropriate time, funding, training and resources to fulfil their role.
- 3.14.22. Ensuring that appropriate cover is in place to attend strategy meetings or CP conferences that take place during the School holidays or in the event that the DSL is absent.
- 3.14.23. Ensuring that a designated 'Appropriate Adult' is in place in order to support children in line with the Police and Criminal Evidence (PACE) act, PACE Code C 2023 (accessible) - GOV.UK ([www.gov.uk](http://www.gov.uk)) which advises that "The role of the appropriate adult (AA) is to safeguard the rights, entitlements and welfare of juveniles and vulnerable persons", with there being further elaboration that the AA is expected to observe that the police are acting properly and fairly in relation to a vulnerable detained persons rights and entitlements, as well as helping the detained person understand their rights.

#### 4. Procedures

- 4.1. Our School procedures for all staff, supply staff, governors, volunteers, visitors and contractors in safeguarding and protecting children from harm are in line with Buckinghamshire Council and [Buckinghamshire Safeguarding Children Partnership](#) safeguarding procedures, "**Working Together to Safeguard Children 2018**" [Working Together to Safeguard Children](#), "**Keeping Children Safe in Education**" and statutory guidance issued under section 29 of the **Counter-Terrorism and Security Act 2015** [Revised Prevent duty guidance: for England and Wales - GOV.UK \(\[www.gov.uk\]\(http://www.gov.uk\)\)](#).

Aylesbury Grammar School is an all-boys selective grammar School for students aged 11 – 18. The School is culturally diverse and serves a wide catchment area.

We will ensure:

- 4.2. We have a designated member of the Senior Leadership Team who has undertaken appropriate training for the role, as recommended by the BSCP. Our Designated Safeguarding Lead (DSL) will be required to update their training in accordance with the Learning Pathway agreed by the BSCP. Our DSL is the person in charge of supporting and monitoring the wellbeing of Looked After Children and former Looked After Children.
- 4.3. We have 4 members of staff (Additional Safeguarding Leads) who will act in the DSL's absence and who have also received training for the role of DSL. In the absence of an appropriately trained member of staff, the most senior member of staff on site will assume this role.
- 4.4. All adults (including supply teachers, volunteers and contractors) new to our School are made aware of the School's policy and procedures for child protection, the name and contact details of the DSL, their role and responsibilities under "**Keeping Children Safe in Education**" and the booklet "**What to do if You're Worried a Child is Being Abused**" [Stat guidance template \(\[publishing.service.gov.uk\]\(http://publishing.service.gov.uk\)\)](#). They will have these explained, as part of their induction into the School.
- 4.5. Visitors are:
  - Clearly identified with visitor/contractor passes.
  - Met and directed by School staff/representatives.
  - Signed in and out of the School, by School staff.
  - Given a safeguarding leaflet to read or directed to a poster informing them of how to report a concern

- Given restricted access to only specific areas of the School, as appropriate.
  - Escorted by a member of staff/representative as required.
  - Given access to students restricted to the purpose of their visit.
- 4.6. All members of staff must complete safeguarding training every 3 years, attend annual refresher training and partake in any training opportunities arranged or delivered by the DSL. Updates must be cascaded to all staff throughout the year. All new staff will receive safeguarding and child protection training during induction to include online safety and the School's filtering and monitoring system.
- 4.7. All parents/carers must be made aware of the School's responsibilities in regard to child protection procedures through this policy.
- 4.8. All staff, including supply staff, must follow the reporting procedures as follows when reporting any child protection concerns:
- Staff must ensure the child is in a safe place and in receipt of support;
  - Staff must initially make a verbal report to the DSL to alert them to the safeguarding/child protection concern;
  - Staff must make a written report using the online system CPOMS
  - Staff must ensure their initial and the time and date of the incident is recorded;
  - A factual account of the incident must be recorded, including who was involved, what was said/seen/heard, where the incident took place and any actual words or phrases used by the child;
  - Use a body map to record any injuries seen or reported by the child;
  - Staff must sign and date the report giving details of their role within School;
  - CPOMS will record when the report was passed to them and what action was taken alongside any outcomes achieved
  - The DSL must ensure the child's wishes and feelings are taken into consideration when deciding on next steps.
- 4.9. Through our **Attendance for Learning Policy**, we have a robust system for monitoring attendance and will act to address absenteeism with parents/carers and students and promptly identify any safeguarding issues arising. Known absences are requested in advance via an absence request form or via the absence email. We involve the local authority attendance team at appropriate stages. First day, and all subsequent days of absence, are reported either via phone call to the absence email or the absent phone line. Any students unaccounted for by 10.00am, the parents are texted to ask them to report the reason why their child is absent from School.
- 4.10. All children attending our School are required to have a minimum of two identified emergency contacts.
- 4.11. Any student whose absence is causing concern and where it has not been possible to make contact with a parent/carer, will be reported as a Child Missing in Education (CME) using the Buckinghamshire CME Protocol.
- 4.12. Any absence that causes a concern, of a student who is currently subject to a child protection or child in need plan is immediately referred to their social worker.
- 4.13. Parents/carers must inform School if there are any changes to a student's living arrangement. Aylesbury Grammar School has a mandatory duty to inform the local authority, via the First Response Team, if they become aware that a child under the age of 16 years old is living with someone other than their parent, step-parent, aunt, uncle or grandparent for a period of more than 28 days. This is defined as being a private fostering arrangement.
- 4.14. All staff, parents/carers and children are made aware of the School's escalation process, which can be activated in the event of concerns not being resolved after the first point of contact. We acknowledge an individual's safeguarding responsibility does not end once they have informed the DSL of any concerns, although specific details of further actions may be appropriately withheld by the DSL as information will only be shared on a need to know basis.
- 4.15. Our lettings policy reflects the ongoing responsibility the School has for safeguarding those using the site outside of normal School hours, ensuring the suitability of adults working with children on School sites at any

time. School must have sight of the up to date Child Protection Policy of any organisation hiring the School's facilities.

- 4.16 The School operates Safer Recruitment practices. Governors ensure that staff who are involved in the recruitment process have received safer recruitment training. Robust procedures are in place in order to prevent and deter people who are unsuitable to work with children, from applying or being employed by the School.
- 4.17 Allegations against members of staff, supply staff, governors, including volunteers and contractors are referred to the Local Authority Designated Officer (LADO).
- 4.18 Our procedures are reviewed and updated annually as a minimum, or as there are changes to legislation.
- 4.19 Children are encouraged to share any concerns or worries with staff and are regularly reminded about this, via their Tutor, in assemblies and in lessons

## **5. Record-Keeping and Retention of Records**

- 5.1 When a disclosure of abuse or an allegation against a member of staff or volunteer has been made, our School must have a record of this. These records are maintained in a way that is confidential and secure, in accordance with our Record Keeping Policy and Data Protection Legislation.
- 5.2. Records should include:
  - a clear and comprehensive summary of the concern; and clear, detailed robust chronology must be maintained
  - details of how the concern was followed up and resolved;
  - a note of any action taken, decisions reached and the outcome.
- 5.3 There is a statutory requirement for our School to promptly pass any child protection records to the student's next School. There must be an auditable system in place to evidence this has taken place. Safeguarding records will be sent separately from the general files using a secure method.
- 5.4 The last statutory School maintains child protection files until a student reaches the age of 25 years, therefore if the transfer School is unknown, or a student is going to be electively home educated, any child protection files will remain at our School in a secure location. Child protection files will normally be destroyed when the student reaches their 25th birthday, unless the Headmaster and DSL have conducted a Risk Assessment for the student and determined that it is necessary to retain some records. We have a robust system for reviewing our archived information held. Our files are stored and disposed of in line with GDPR protocols.

## **6. Alternative provision**

When a child is accessing an alternative provision, the School remains responsible for the safeguarding of that child. It will ensure that the provision has secure and robust safeguarding arrangements in place and meets the needs of the child. A member of staff, from School, will regularly visit the provision and meet with the child to hear their voice and ensure regular attendance.

## **7. Confidentiality**

- 7.1 We recognise that all matters relating to child protection are confidential.
- 7.2 The Headmaster or Designated Safeguarding Lead must only disclose personal information about a student to other members of staff on a need-to-know basis.
- 7.3 Staff must not keep duplicate or personal records of child protection concerns. All information must be reported to the Designated Safeguarding Lead and securely stored in the designated location within the School, separate from the student records.

- 7.4 All staff are aware they cannot promise a child to keep secrets which might compromise the child's safety or well-being or that of another as they have a duty to share. Staff must, however, reassure the child that information will only be shared with those people who will be able to help them and therefore need to know.
- 7.5 We will always undertake to share our intention to refer a child to Social Care (First Response) with their parent/carer's consent, unless to do so could put the child at greater risk of harm or impede a criminal investigation. If in doubt, we will consult with First Response on this point. We recognise that GDPR must not be a barrier for sharing information regarding safeguarding concerns in line with 'Working Together'.
- 7.6 Gov guidance link:

<https://www.gov.uk/government/publications/safeguarding-practitioners-information-sharing-advice>

## 8. Recognising abuse and dealing with a disclosure

- 8.1 In the event of a child disclosing abuse, staff must refer to the following guidance:  
**"What to do if You're Worried a Child is Being Abused"** [Stat guidance template \(publishing.service.gov.uk\)](https://publishing.service.gov.uk)
- 8.2 Listen to the child, allowing the child to tell you what has happened in their own way, and at their own pace. Staff must not interrupt a child who is freely recalling significant events.
- 8.3 Remain calm. Be reassuring and supportive, endeavouring to not respond emotionally.
- 8.4 Do not ask leading questions. Staff are reminded to ask questions only when seeking clarification about something the child may have said or to gain sufficient information to know that this is a safeguarding concern.
- 8.5 Make an accurate record of what they have seen/heard using the School's record keeping processes, recording; times, dates or locations mentioned, using as many words and expressions used by the child, as possible.
- 8.6 Staff must not substitute anatomically correct names for body part names used by the child. Staff know to use the words that the child uses.
- 8.7 Reassure the child that they did the right thing in telling someone.
- 8.8 Staff must explain to the child what will happen next and the need for the information to be shared with the DSL.
- 8.9 In the unlikely event the DSL and Additional DSL not being available, staff are aware they must share concerns with the most senior member of staff.
- 8.10 **If there is immediate risk of harm to a child, staff will NOT DELAY and will ring 999.**
- 8.11 The child will be monitored/accompanied at all times following a disclosure, until a plan is agreed as to how best they can be safeguarded.

### Reporting systems for children:

At Aylesbury Grammar School children are made to feel safe and secure to share any concerns that they may have and know the systems in place for making any such report. There is an anonymous concern form on the School website, or they can speak to any member of staff.

- 8.12 Following a report of concerns the DSL must:
- 8.12.1 Decide whether there are sufficient grounds for suspecting significant harm, in which case a referral must be made to First Response and the police if it is appropriate, referring to the guidance, When to call the police, [2491596 C&YP Schools guides.indd \(npcc.police.uk\)](#). The rationale for this decision should be recorded by the DSL.

- 8.12.2 School should try to discuss any concerns about a child's welfare with parents/carers and, where possible, obtain consent before making a referral to First Response. However, in accordance with DfE guidance, this should only be done when it will not place the child at increased risk or could impact a police investigation. Where there are doubts or reservations about involving the child's family, the DSL should clarify with First Response or the police whether the parents/carers should be told about the referral and, if so, when and by whom. This is important in cases where the police may need to conduct a criminal investigation. The child's views should also be taken into account.
- 8.12.3 If there are grounds to suspect a child is suffering or is likely to suffer significant harm, the DSL (or Additional) must contact First Response by telephone immediately, in first instance and then complete the Multi Agency Referral Form (MARF).
- 8.12.4 If the child is in immediate danger and urgent protective action is required, the police must be called. The DSL must then notify First Response of the occurrence and what action has been taken and to take advice about informing parents/carers.
- 8.12.5 If a child needs urgent medical attention, the DSL (or Additional) should call an ambulance via 999. DSL to contact First Response; advice to be sought from First Response about informing parents/carers.

## **9. Multi-agency working**

- 9.1 Aylesbury Grammar School know what the role of Schools is, as a relevant agency, and will contribute to multi-agency working, in line with the statutory guidance 'Working Together to Safeguard Children'.
- 9.2 When named as a relevant agency and involved in safeguarding arrangements, Aylesbury Grammar School will co-operate alongside other agencies with the published arrangements.
- 9.3 Aylesbury Grammar School will contribute to inter-agency plans to offer children support of early help and those children supported through child protection plans.
- 9.4 Aylesbury Grammar School will allow access for and work with children's social care to conduct or consider whether to conduct as section 17 or section 47 assessment.
- 9.5 If, following a referral, the situation is not improving for the child, the DSL will follow the escalation process.

## **10. Supporting Staff**

- 10.1 We recognise that staff becoming involved with a child who has suffered harm, or appears to be likely to suffer harm, could find the situation stressful and upsetting.
- 10.2 We will support such staff by providing an opportunity to talk through their anxieties with a member of the safeguarding team and to seek further support if necessary. This could be provided by the Headmaster or another trusted colleague, Occupational Health, and/or a representative of a professional body, Employee Assistance Programme or trade union, as appropriate.

## **11. Safer recruitment**

- 11.1 Aylesbury Grammar School follows the guidance as set out in KCSiE together with the information provided by the Bucks Safeguarding Children Partnership to ensure that all the appropriate checks have been carried out on new staff and volunteers.

## **12. Allegations against staff, supply staff, volunteers and contractors (including Governors)**

- 12.1 Here at Aylesbury Grammar School, we have our own procedures for managing concerns and/or allegations against those working in School to include staff, supply teacher, volunteers and contractors.
- 12.2 KCSIE - Part four contains comprehensive guidance covering the two levels of allegations/concern:
1. Allegations that may meet the harms threshold
  2. Allegations/concerns that do not meet the harms threshold- referred to for the purpose of this guidance as 'low level concerns'.
- 12.3 All School staff, supply staff, volunteers and contractors must take care not to place themselves in a vulnerable position with a child. It is always advisable for interviews or work with individual children or parents/carers to be conducted in view of other adults.
- 12.4 We understand that a student may make an allegation against a member of staff, member of supply staff, volunteer or contractor. If such an allegation is made, the member of staff notified of the allegation will immediately inform the Headmaster or the most senior teacher if the Headmaster is not present. If the allegation is made against the Headmaster, the Chair of Governors must be informed.
- 12.5 At Aylesbury Grammar School we recognise that an allegation may be made if a member of staff, a member of supply staff, a volunteer or a contractor has:
- Behaved in a way that has harmed a child, or may have harmed a child
  - Possibly committed a criminal offence against or related to a child
  - Behaved towards a child or children in a way that indicates he or she may pose a risk of harm to children
  - Behaved or may have behaved in a way that indicates they may not be suitable to work with children. This includes behaviours both inside and outside of School.
- 12.6 The Headmaster/most senior teacher on all such occasions must immediately discuss the content of the allegation with the Local Authority Designated Officer (LADO).
- 12.7 The Headmaster/most senior teacher must:
- 12.7.1 Follow all advice given by the LADO throughout the investigation process, including how to manage the staff member, supply staff member, volunteer or contractor against whom the allegation is made, as well as supporting other staff, supply staff members, volunteers and contractors within the workplace.
  - 12.7.2 Follow all advice given by the LADO relating to supporting the child making the allegation, as well as other children connected to the organisation.
  - 12.7.3 Ensure feedback is provided to the LADO about the outcome of any internal investigations.
- 12.8 The School will follow the local safeguarding procedures for managing allegations against staff, supply staff, volunteers and contractors, a copy of which can be found on the Buckinghamshire Children Partnership website.
- 12.9 If the allegation is made against a member of staff supplied by an external agency, the agency will be fully kept fully informed and involved in any enquiries from the LADO.
- 12.10 Suspension of the member of staff against whom an allegation has been made needs careful consideration and, if necessary, we will consult with the LADO in making this decision. Guidance will also be sought from HR.

- 12.11 If a suspension is made, restrictions will apply to all staff, supply staff, volunteers and contractors regarding contact with them whilst they are suspended, including contact via social media, such as Facebook and Twitter.
- 12.12 Our lettings agreement for other users requires that the organiser will follow the Buckinghamshire Council procedures for managing allegations against staff and where necessary, the suspension of adults from School premises.
- 12.13 Should an individual staff member, supply staff member, governor, volunteer or contractor be involved in child protection, other safeguarding procedures or Police investigations in relation to abuse or neglect, they must immediately inform the Headmaster. In these circumstances, the School will need to assess whether there is any potential for risk of transfer to the workplace and the individual's own work with children.

### 13. Whistleblowing

- 13.1 We have a Whistleblowing Policy which is part of the School's HR employment manual. This can be found in the Staff Information folder on the shared drive. Staff are required to familiarise themselves with this document during their induction period.
- 13.2 All staff must be aware of their duty to raise concerns about the unsafe practice or the attitude or actions of colleagues and report their concerns to the Headmaster or Chair of Governors.
- 13.3 Low – level concerns. At Aylesbury Grammar School all staff know they have a responsibility to share any concerns, no matter how small, about any adults working in School to the DSL. Staff are made aware of what a low level concern might look like using the examples from KCSIE page 10. All reports will be dealt with effectively and recorded, enabling the School to identify any concerning behaviour and support any adults becoming the subject of false low -level concerns.

### 14. Physical intervention/Positive handling

- 14.1 Our policy on physical intervention/positive handling by staff is set out as part of our Behaviour Policy.

[Use of reasonable force and restrictive practices in Schools - GOV.UK \(www.gov.uk\)](https://www.gov.uk/government/publications/use-of-reasonable-force-and-restrictive-practices-in-schools)

### 15. Anti-Bullying

- 15.1 Anti-Bullying is referenced within the Anti Bullying Policy and the Behaviour Policy, and measures are in place to prevent and respond to all forms of bullying, which acknowledges that to allow or condone bullying may lead to consideration under child protection procedures.

### 16. Discriminatory Incidents

- 16.1 In line with the **Equalities Act 2010**, our **Equality Statement and Objectives and Equal Opportunities Policy for Students** addresses all forms of discriminatory incidents.

### 17. Health and Safety

- 17.1 We recognise the importance of safeguarding students throughout the School day. Our **Health and Safety policy** reflects the consideration we give to the protection of our children, both physically and emotionally, within the School environment.
- 17.2 Part of the safeguarding measures we have in place include the safe dropping off and collection of students at the start and end of the School day. The majority of our students travel to and from School via bus. Some students cycle to School, some walk to School and some are dropped off by car. Parents who drive their

children to School know that they must drop them off away from School site and to follow safe routes to School.

- 17.3 Students who leave the site during the School day do so only with the written permission of a parent/carer and are collected by an authorised adult where appropriate. School should be notified by the parents/carers regarding whom they have authorised for this task. Students who arrive late or are required to leave early for authorised reasons must sign in and out.
- 17.4 In the event of a student going missing during the course of the School day we will carry out immediate checks to ensure the student is not on site, we will then make contact with the student's parents/carers and inform the police.
- 17.5 When the School is hired out to a 3<sup>rd</sup> party provider, we ensure that they have appropriate arrangements in place to keep children safe through sight of their child protection and safer recruitment procedures.
- 17.6 At Aylesbury Grammar School we ensure that we are aware of the content of materials used by any visiting speakers prior to their visit.

## 18. Prevent Duty

- 18.1 We are aware of the Prevent Duty under **Section 26 of the Counter Terrorism and Security Act 2015** to protect young people from being drawn into terrorism.
- 18.2 All School staff and governors have completed Prevent training by the end of an academic year.
- 18.3 We have in place and monitor appropriate web filtering systems.
- 18.4 The DSLs and senior leaders are familiar with their duties under The Prevent Duty Guidance: [Revised Prevent duty guidance: for England and Wales - GOV.UK \(www.gov.uk\)](https://www.gov.uk/government/uploads/system/uploads/attachment_data/file/616222/Prevent-Duty-Guidance-for-England-and-Wales.pdf)

## 19. Online Safety

- 19.1 All staff are aware of the School policy for Online-Safety which sets out our expectations relating to:
- Creating a safer online learning environment,
  - Giving everyone the skills, knowledge and understanding to help children stay safe on-line, question the information they are accessing and support the development of critical thinking,
  - Inspiring safe and responsible use of mobile technologies, to combat behaviours on-line which may make students vulnerable, including the sending of nude or semi-nude images.
  - Use of camera equipment, including smart phones.
  - What steps to take if there are concerns and where to go for help.
  - Staff use of social media as set out in the **Staff Code of Conduct**.
- 19.2 Cyber-bullying by children, via texts, social media and emails, will be treated as seriously as any other type of bullying and will be managed through our anti-bullying procedures. School will also act if concerns raised about cyber bullying outside of School cause any concern within the School and amongst the student body or amongst staff.
- 19.3 School are aware of the risks posed by children in the online world; in particular non-age appropriate content linked to self-harm, suicide, grooming, harmful sexual behaviour and radicalisation.
- 19.4 Students, staff and parents/carers are supported to understand the risks posed by:
- the **CONTENT** accessed by students
  - their **CONDUCT** on-line
  - who they have **CONTACT** within the digital world

- **COMMERCE** - risks such as online gambling, inappropriate advertising, phishing and or financial scams.

**Further information can be found in our ICT Acceptable Use for Students Policy**

- 19.5 Aylesbury Grammar School has online filtering and monitoring systems in place to ensure children are safeguarded from potentially harmful online material. These systems are regularly monitored, at least annually, by the DSL, IT provider and nominated governor. A record will be kept of the reviews.
- 19.6 The School will follow the advice as given by the government, to advise and support children with any online learning taking place at home to ensure this is done so safely.
- 19.7 Our Mobile Phone Policy is part of our Behaviour Policy which sets out the acceptable use of mobile technologies by students whilst onsite. This includes sanctions which will be applied when these boundaries are not adhered to.
- 19.8 Visitors to our School are respectfully requested to turn all mobile devices off.
- 19.9 Staff use of mobile technology whilst on site is set out in the Staff Code of Conduct.
- 19.10 All staff receive awareness training in order to understand the risks children are exposed to.
- 19.11 All staff have an understanding of expectations, roles and responsibilities with regards to the online filtering and monitoring processes.

## **20. Sending nude or semi-nude images**

- 20.1 Sending nude images or semi-nude images, is one of a number of 'risk-taking' behaviours associated with the use of digital technologies, social media or the internet. It is accepted that children experiment and challenge boundaries and therefore the risks associated with 'online' activity can never be completely eliminated.
- 20.2 Further advice and guidance can be found using this link: [Sharing nudes and semi-nudes](#)
- 20.3 Staff, students and parents/carers are supported, via training, to understand the creation and sharing of sexual imagery, such as photos or videos, of under 18s is illegal. This includes images of students themselves if they are under the age of 18.
- 20.4 Any disclosures/incidents that occur will follow the normal safeguarding practices and protocols for our School. We will also use the guidelines for responding to incidents, as set out in: [Sharing nudes and semi-nudes: advice for education settings working with children and young people - GOV.UK \(www.gov.uk\)](#) produced by the UK Council for Internet Safety. The DSL will inform parents/carers of any incidents.

## **21. Child on Child Abuse, including sexual violence and sexual harassment**

- 21.1 Aylesbury Grammar School believes that all children have a right to attend School and learn in a safe environment free from harm by both adults and other students. We recognise that some safeguarding concerns can occur via child on child abuse.
- 21.2 All staff operate a zero-tolerance policy to child on child abuse and will not pass off incidents as 'banter' or 'just growing up'.
- 21.3 All staff recognise that child on child issues may include, but may not be limited to:
- Bullying (including cyber bullying)
  - Racial abuse
  - Physical abuse, such as hitting, hair-pulling, shaking, biting or other forms of physical harm

- Sexual violence and sexual harassment
- Causing someone to engage in sexual activity without consent, such as forcing someone to strip, touch themselves sexually, or to engage in sexual activity with a third party
- Abuse related to sexual orientation or identity
- Sending nude or semi-nude images (consensual & non-consensual)
- Upskirting and initiation/hazing type violence and rituals
- Emotional abuse
- Abuse within intimate partner relationships

21.4 All staff should be able to reassure victims that they are being taken seriously and that they will be supported and kept safe. Incidents of child-on-child abuse must be reported to the DSL, who will refer to the appropriate agencies as required.

21.5 The following will be considered when dealing with incidents:

- Whether there is a large difference in power between the victim and perpetrator i.e. size, age, ability, perceived social status or vulnerabilities, including SEND, CP/CIN or CLA
- Whether the perpetrator has previously tried to harm or intimidate students
- Any concerns about the intentions of the alleged perpetrator
- How to best support and protect the victim and alleged perpetrator as well as any other children who may have been involved or impacted.
- Risk assessments and safety planning will be created in conjunction with external professionals

21.6 In order to minimise the risk of child on child abuse taking place, School must:

- Deliver RE/RSE/PSHE to include teaching students about how to keep safe and understanding what acceptable behaviour looks like
- Ensure that students know that all members of staff will listen to them if they have concerns and will act upon them
- Have systems in place for any student to be able to voice concerns
- Develop robust risk assessments if appropriate
- Refer to any other relevant policies when dealing with incidents, such as the Behaviour Policy and/or the Anti-Bullying Policy

21.7 We recognise that 'Upskirting' involves taking a photograph under an individual's clothing without their knowledge. We understand that it causes the victim distress and humiliation and that any gender can be a victim. Staff recognise that 'Upskirting' is a criminal offence and must promptly report any such incidents to the Headmaster, DSL or most senior member of staff.

21.8 Reference will be made to the following government guidance and part 5 of **the Keeping Children Safe in Education** to ensure that all staff have an understanding of the serious nature of sexual violence and sexual harassment between children in Schools. The School ensure that they keep up with current legislation and practice referring to trusted advisors such as BSCP, NSPCC and Ofsted guidance

21.9 Sexual violence and sexual harassment can occur between two children of **any age and sex**. It can occur through a group of children sexually assaulting or sexually harassing a single child or group of children. This can occur online, face to face (both physically and verbally) and can take place inside or outside of School. As set out in Part five of the KCSIE, all staff maintain an attitude of **'it could happen here'** and it is never acceptable.

21.10 All staff have a responsibility to address inappropriate behaviour in a timely manner, however seemingly insignificant it may appear.

21.11 All victims will be reassured that they are being taken seriously and that they will be supported and kept safe. No child will ever be made to feel ashamed for making a report or that they are creating a problem for our School.

21.12 Support will be given to both victims and perpetrators

## 22. Cultural Issues

- 22.1 As a School we are aware of the cultural diversity of the community around us and work sensitively to address the unique culture of our students and their families as they relate to safeguarding and child protection. This includes children at risk of harm from abuse arising from culture, ethnicity, faith and belief on the part of their parent, carer or wider community.
- 22.2 Staff must report concerns about abuse linked to culture, faith and beliefs in the same way as other child protection concerns.

## 23. So-Called 'Honour' Based Abuse

- 23.1 Staff at our School understand there is a legal duty to report known cases of Female Genital Mutilation (FGM) and so called 'Honour' Based Abuse to the police and they will do this with the support of the DSL. [Mandatory reporting of female genital mutilation: procedural information - GOV.UK](#)
- 23.2 Our School is aware of the need to respond to concerns relating to forced marriage and understand that it is illegal, a form of child abuse and a breach of children's rights. We recognise some students, due to capacity or additional learning needs, may not be able to give an informed consent and this will be dealt with under our child protection processes. Aylesbury Grammar School staff can contact the Forced Marriage Unit if they need advice or information. Contact 020 7008 0151 [fmu@fco.gov.uk](mailto:fmu@fco.gov.uk)
- 23.3 We are aware of the signs of FGM [Female genital mutilation \(FGM\) | NSPCC](#)
- 23.4 We recognise both male and female students may be subject to honour-based abuse.
- 23.5 We promote awareness through training and access to resources, ensuring that the signs and indicators are known and recognised by staff.
- 23.6 Any suspicions or concerns for forced marriage are reported to the DSL who will refer to First Response or the police if emergency action is required.

## 24. Contextual Safeguarding and extra- familial harms

- 24.1 Contextual Safeguarding is an approach to understanding, and responding to, children's experiences of significant harm beyond their families. It recognises that the different relationships that children form in their neighbourhoods, Schools and online can feature violence and abuse. Parents and carers may have little influence over these contexts, and children's experiences of extra-familial abuse can undermine parent/carer-children relationships. Extra-familial harm is linked to contextual safeguarding; these concepts refer to harms that occur outside of the family system, including harmful online contact
- 24.2 At Aylesbury Grammar School all staff recognise that students may encounter safeguarding incidents that happen outside of School and can occur between children outside of this environment. We will respond to such concerns, reporting to the appropriate agencies in order to support and protect the student.
- 24.3 All staff and especially the DSLs, will consider the context of incidents that occur outside of School to establish if situations outside of their families may be putting the student's welfare and safety at risk of abuse or exploitation, including (but not limited to) sexual exploitation, criminal exploitation and serious youth violence.

- 24.4 Children who may be alleged perpetrators will also be supported to understand the impact of contextual issues on their safety and welfare.
- 24.5 In such cases the individual needs and vulnerabilities of each child will be considered.
- 24.6 At Aylesbury Grammar School we are aware of some unique contextual safeguarding challenges related to our geographical area, the wide nature of our catchment area, the nature of our site in a town centre and because we are a School in Buckinghamshire, a county council which has had successive 'Inadequate' ratings for social care.
- 24.7 Contextual safeguarding concerns in relation to the site include the close proximity to canal walks, the cemetery, the long distance that children travel unsupervised by bus, a very busy bus park, a probation office, and a newsagent's which has been known to sell alcohol and tobacco to children. We have mitigated against these challenges with increased School security measures, good communication with the bus companies, local police and communications with our stakeholders.
- 24.8 Further contextual safeguarding concerns in relation to the site arise from there being 3 very large secondary Schools and several primary Schools within very close proximity of each other. This makes the area very busy at critical points of the day. We mitigate against this by staggering start and end times to the day and by communication with stakeholders.
- 24.9 Aylesbury Grammar School is in Buckinghamshire and the Council has previously been rated 'Inadequate' in relation to social care. This Child Protection Policy is based on the Buckinghamshire model policy as they are our primary social care partners. We do however check our policy with our lawyers and against other local authorities. The DSL team works with other Local Authorities (due to our wide catchment area) and this provides a good benchmark against which to check responses, support and the advice we give and provide.
- 24.10 Aylesbury is a town with good transport links to London and other big cities; this, along with other factors, makes Aylesbury a target for County Lines. This is mitigated against by the DSL attending regular webinars about OCG, whole staff training, communication to all stakeholders and good contact with our police links.
- 24.11 Aylesbury has known high profile historical concerns in relation to extremism and issues relating to the Prevent agenda. This is mitigated against by the DSL being a WRAP trainer, all staff being trained in Prevent and being aware of signs and indicators of extremism, communication with the local Prevent Officer, our anonymous Concern Form and developing understanding of different communities, cultures and faiths.
- 24.12 Aylesbury Grammar School has a very wide catchment area due to the nature of our grammar School status; this means we work across at least 5 local authority safeguarding teams. We mitigate against this by aiming to be as up to date as we can be across the different requirements of the MASH teams and by seeking advice prior to submission of referrals.
- 24.13 Further guidance can be found at: <https://contextualsafeguarding.org.uk/>

## **25. Serious Violence**

- 25.1 All staff are aware of signs and indicators which may signal that children are at risk from, or are involved with, serious violent crime. These may include increased absence from School, a change in friendships or relationships with older individuals or groups, a significant decline in performance, signs of self-harm or significant change in well-being or signs of assault or unexplained injuries. Staff are aware that unexplained gifts or new possessions could also indicate that children have been approached by, or are involved with, individuals associated with criminal networks or gangs.
- 25.2 At Aylesbury Grammar School we are aware of the range risk factors which increase the likelihood of involvement in serious violence such as being male, having been frequently absent or permanently excluded from School, having experienced child maltreatment and having been involved in offending such as theft or

robbery. School will take appropriate measures to manage any situations arising. [Preventing youth violence and gang involvement - Practical advice for Schools and colleges \(publishing.service.gov.uk\)](#)

## **26. Domestic Abuse**

- 26.1 All staff recognise that children can witness and be affected by domestic abuse that occurs within their own home between family members. They may also experience abuse within their own intimate relationships, referred to as 'teenage relationship abuse' and can suffer long lasting emotional and psychological effects. Staff will report any concerns using the School's safeguarding procedures.

## **27. Children who need a social worker (Child Protection and Child in Need Plans)**

- 27.1 Staff recognise that children may have a social worker due to safeguarding or welfare needs and this can cause them to have barriers with attendance, behaviour, learning and mental health.
- 27.2 Aylesbury Grammar School will share information with a social worker for any child whom they are supporting to ensure decisions are made in the best interests of the child.
- 27.3 Informed decisions will be made by staff with regards to safeguarding for those children who are being supported by a social worker.
- 27.4 The Virtual School lead the support for this cohort of children and Aylesbury Grammar School will work in partnership with them and the Local Authority to improve outcomes for these children.

## **28. Mental Health**

- 28.1 At Aylesbury Grammar School we are aware that mental health problems can be an indicator that a child has suffered or may be at risk of suffering abuse, neglect, or exploitation.
- 28.2 Staff recognise that traumatic adverse childhood experiences can have lasting impact throughout a child's life and this can impact on mental health, behaviour and education.
- 28.3 Staff will report any mental health concern that is linked to a safeguarding concern to the DSL/Additional DSL or Mental Health Lead (Mrs JC Richards)
- 28.4 Where there are concerns for a child's mental health Aylesbury Grammar School will seek advice from a trained professional, who would be able to make a diagnosis of a mental health problem.  
[Mental health and behaviour in Schools \(publishing.service.gov.uk\)](#)

## **29. Looked After Children**

- 29.1 Aylesbury Grammar School has a named Designated Teacher (DT), who is responsible for promoting the education achievement and well-being for LAC and previously LAC children. At Aylesbury Grammar School this person is the DSL
- 29.2 The DSL works closely with staff to ensure that any safeguarding concerns are responded to quickly and effectively and are shared with the appropriate agencies.
- 29.3 The Virtual School, who is responsible for overseeing the progress of this group of children, work in partnership with the DSL and other agencies, supporting them to promote better outcomes for these children.

### **30. Children with family members in prison**

- 30.1 Children who have a parent in prison are at risk of poor outcomes including poverty, stigma, isolation and poor mental health. School will access support for any affected children through The National Information Centre on Children of Offenders (NICCO) who can provide information designed to support professionals working with offenders and their children.

[NICCO](#)

### **31. Homelessness**

- 31.1 Aylesbury Grammar School recognises that being homeless or being at risk of becoming homeless presents a real risk to a child's welfare and that some 16 and 17 year olds could be living independently from their parents or guardians. If there are indicators that a family or individual are at risk, School will seek timely support from the local authority.

### **32. Modern Slavery and the National referral Mechanism**

- 32.1 Modern slavery encompasses human trafficking and slavery, servitude and forced or compulsory labour. Exploitation can take many forms, including sexual exploitation, forced labour, slavery, servitude, forced criminality and the removal of organs. If School are concerned that a child is being affected by modern slavery they will refer to the home office guidance for further information on the indicators that someone may be a victim, what support is available to victims and how to refer them to the NRM, whilst also seeking support from the local authority.

[Modern slavery: how to identify and support victims - GOV.UK \(www.gov.uk\)](#)

### **33. Allegations against students**

- 33.1 If an allegation is made against a student, the School will follow the procedures in the Behaviour Policy with regards to sanctions that may need to be applied.
- 33.2 Where there is a risk of significant harm, a child on child referral will be made to Children's Services for either victim, perpetrator or both.
- 33.3 If it is necessary for a child to be interviewed by the police, or other authorities, School will ensure that parents/carers are informed as soon as possible, following advice from external agencies and that the child is supported by an appropriate adult during the interview. The safety and welfare of the child will always be carefully considered by School.

### **34. Use of Photography**

- 34.1 We will often use photographs and film to capture achievements, monitor a child's development and help promote successes within our School. We like to have a record of all the wonderful activities our students take part in; guidelines for the use of photography in Aylesbury Grammar School are set out in our ICT Acceptable Use Policies.

### **35. Policy Review**

- 35.1 The School's governing body is responsible for ensuring the annual review of this policy. The date the next review is due is on the front cover of this policy.

# Appendix

Everyone who works with children has a duty to safeguard and promote their welfare. They should be aware of the signs and indicators of abuse and know what to do and to whom to speak if they become concerned about a child or if a child discloses to them.

The following is intended as a reference for School staff and parents/carers if they become concerned that a child is suffering or likely to suffer significant harm.

The Children Act 1989 defines abuse as when a child is suffering or is likely to suffer 'significant harm'. Harm means ill treatment or the impairment of health or development. Four categories of abuse are identified:

## Categories of Abuse

Child abuse is a form of maltreatment. Somebody may abuse or neglect a child by inflicting harm, or by failing to act to prevent harm. Children people may be abused in a family or in an institutional or community setting by those known to them or, more rarely, by others. Abuse can take place wholly online, or technology may be used to facilitate offline abuse. Children may be abused by an adult or adults, or another child or children.

## Physical Abuse

A form of abuse which may involve; hitting, shaking, throwing, poisoning, burning or scalding, drowning, suffocating, or otherwise causing physical harm to a child. Physical harm may also be caused when a parent or carer fabricates the symptoms of, or deliberately induces, illness in a child.

## Emotional Abuse

The persistent emotional maltreatment of a child such as to cause severe and persistent adverse effects on the child's emotional development. It may involve conveying to a child that they are worthless or unloved, inadequate, or valued only insofar as they meet the needs of another person. It may include not giving the child opportunities to express their views, deliberately silencing them or 'making fun' of what they say or how they communicate. It may feature age or developmentally inappropriate expectations being imposed on children. These may include interactions that are beyond a child's developmental capability, as well as overprotection and limitation of exploration and learning, or preventing the child participating in normal social interaction. It may involve seeing or hearing the ill-treatment of another. It may involve serious bullying (including cyber bullying), causing children frequently to feel frightened or in danger, or the exploitation or corruption of children. Some level of emotional abuse is involved in all types of maltreatment of a child, though it may occur alone.

## Sexual Abuse

Involves forcing or enticing a child to take part in sexual activities, not necessarily involving a high level of violence, whether or not the child is aware of what is happening. The activities may involve physical contact, including assault by penetration (for example, rape or oral sex) or non-penetrative acts such as masturbation, kissing, rubbing and touching outside of clothing. They may also include non-contact activities, such as involving children in looking at, or in the production of, sexual images, watching sexual activities, encouraging children to behave in sexually inappropriate ways, or grooming a child in preparation for abuse. Sexual abuse can take place online and technology can be used to facilitate offline abuse. Sexual abuse is not solely perpetrated by adult males. Women can also commit acts of sexual abuse, as can other children.

## Neglect

The persistent failure to meet a child's basic physical and/or psychological needs, likely to result in the serious impairment of the child's health or development. Neglect may occur during pregnancy as a result of maternal substance abuse. Once a child is born, neglect may involve a parent or carer failing to:

- a) provide adequate food, clothing and shelter (including exclusion from home or abandonment)
- b) protect a child from physical and emotional harm or danger
- c) ensure adequate supervision (including the use of inadequate caregivers)

- d) ensure access to appropriate medical care or treatment. It may also include neglect of, or unresponsiveness to, a child's basic emotional needs.

## **Exploitation**

Exploitation is a form of child abuse and may take a number of forms:

### **Child Sexual Exploitation (CSE) and Child Criminal Exploitation (CCE)**

Both CSE and CCE are forms of abuse that occur where an individual or group takes advantage of an imbalance in power to coerce, manipulate or deceive a child into taking part in sexual or criminal activity, in exchange for something the victim needs or wants, and/or for the financial advantage or increased status of the perpetrator or facilitator and/or through violence or the threat of violence. CSE and CCE can affect children, both male and female and can include children who have been moved (commonly referred to as trafficking) for the purpose of exploitation. Taken from – **“Keeping Children Safe in Education”**.

[Home Office – Serious Violence Strategy, April 2018 \(publishing.service.gov.uk\)](#)

## **County Lines**

County lines is a term used to describe gangs and organised criminal networks involved in exporting illegal drugs using dedicated mobile phone lines or other form of “deal line”. This activity can happen locally as well as across the UK - no specified distance of travel is required. Children and vulnerable adults are exploited to move, store and sell drugs and money. Offenders will often use coercion, intimidation, violence (including sexual violence) and weapons to ensure compliance of victims. Taken from **“Keeping Children Safe in Education”**

## **Extremism**

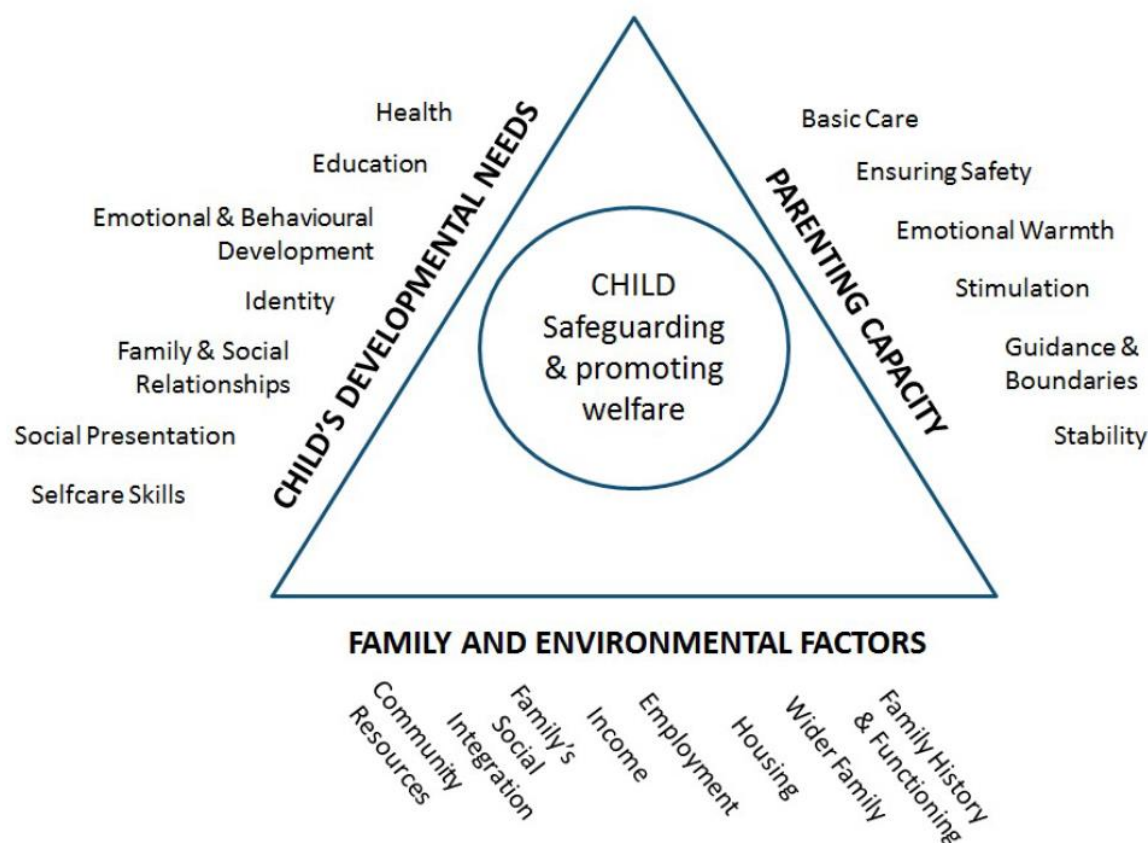
Extremism is the vocal or active opposition to our fundamental values, including democracy, the rule of law, individual liberty and the mutual respect and tolerance of different faiths and beliefs. This also includes calling for the death of members of the armed forces. Radicalisation refers to the process by which a person comes to support terrorism and extremist ideologies associated with terrorist groups.

### **Harmful sexual behaviour (HSB)**

Children's sexual behaviour ranges, from normal and developmental expected to inappropriate, problematic, abusive and violent. The inappropriate, problematic, abusive and violent behaviour can cause developmental damage and is referred to as “Harmful Sexual Behaviour” (HSB).

## Assessment Framework

(from Working Together to Safeguard Children, July 2018)



Every assessment should draw together relevant information gathered from the child and their family and from relevant practitioners including teachers and School staff, early years workers, health practitioners, the police and adult social care.

Every assessment of a child should reflect the unique characteristics of the child within their family and community context.

Each child whose referral has been accepted by children's social care should have their individual needs assessed, including an analysis of the parental capacity to meet those needs, whether they arise from issues within the family or the wider community.

Frequently, more than one child from the same family is referred and siblings within the family should always be considered.